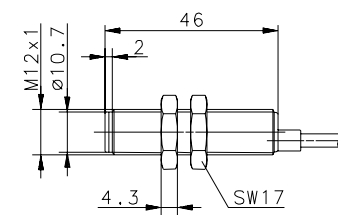
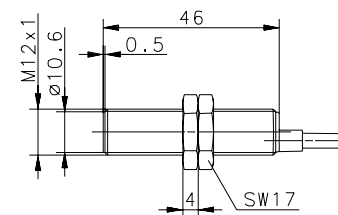
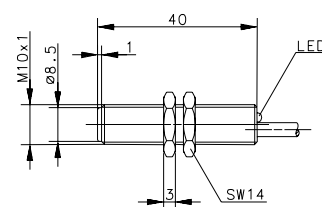
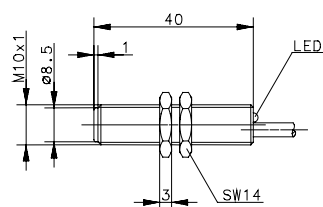


ELECTRONIC MAGNETIC SENSORS Type M10, M12

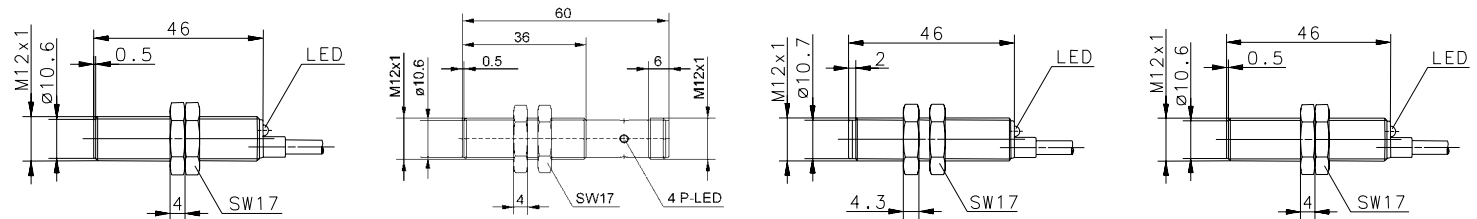


Type	M10	M10	M12	M12
Enclosure material	CuZn39Pb3	CuZn39Pb3	CuZn39Pb3	PA, red
Operating mode	Hall	MR	Hall	Hall
Magnetic sensitivity (mT)	10 mT	1 mT	10 mT	10 mT
Sensing distance (Sn)	17 mm	45 mm	17 mm	17 mm
Reference magnet (Side)	T-62 N/S	T-62 N/S	T-62 N/S	T-62 N/S
Type of connection	Cable 2 m	Cable 2 m	Cable 2 m	Cable 2 m
Special feature	Temperature	All-metal		
PNP	NO contact	6472261080 MEM-M10PS/H10-KL2T	6373261087 MEM-M10PS/M01-KL2	
PNP	NC contact		6373161088 MEM-M10PÖ/M01-KL2	
PNP	bistable			
NPN	NO contact		6362662004 MEM-M12NS/H10-K2	6362662005 MEK-M12NS/H10-K2
NPN	bistable		6363862035 MEM-M12NB/H11-K2	6363862036 MEK-M12NB/H11-K2
Technical data				
Rated operating voltage range	U_b	10–39 V	10–39 V	4.5–24 V
Rated operating current	I_e	400 mA	400 mA	25 mA
Max. switching voltage	F	1500 Hz	10 kHz	20 kHz
Function/operating voltage indicator		LED/-	LED/-	-/-
Sensitivity adjustable				
Short circuit-protection		cyclic	cyclic	Current limiter
Mechanical data				
Ambient temperature (min/max)		-40°C/+70°C	-25°C/+70°C	-25°C/+70°C
Protection class in accordance with IEC 529, EN 60529		IP67	IP67	IP67
Connection		3 x 0.14 mm ²	3 x 0.14 mm ²	3 x 0.14 mm ²





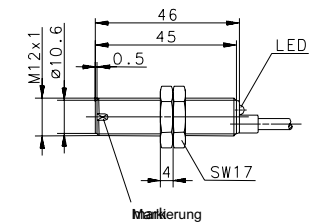
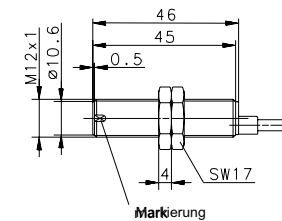
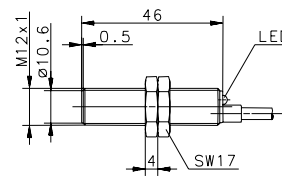
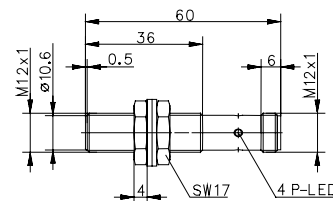
Type	M12	M12	M12	M12	
Enclosure material	CuZn39Pb3	CuZn39Pb3	PA, red	CuZn39Pb3	
Operating mode	Hall	Hall	Hall	MR	
Magnetic sensitivity (mT)	10 mT	10 mT	10 mT	1 mT	
Sensing distance (Sn)	17 mm	17 mm	17 mm	45 mm	
Reference magnet (Side)	T-62 N/S	T-62 N/S	T-62 N/S	T-62 N/S	
Type of connection	Cable 2 m	Connector M12 x 1	Cable 2 m	Cable 2 m	
Special feature					
PNP	NO contact	6372262090 MEM-M12PS/H10-KL2	6372262160 MEM-M12PS/H10-KLS12	6372262089 MEK-M12PS/H10-KL2	6373262094 MEM-M12PS/M01-KL2
PNP	NC contact	6372162092 MEM-M12PÖ/H10-KL2		6372162091 MEK-M12PÖ/H10-KL2	6373162096 MEM-M12PÖ/M01-KL2
PNP	bistable	6373462126 MEM-M12PB/H11-KL2		6373462125 MEK-M12PB/H11-KL2	
NPN	NO contact				
NPN	bistable				
Technical data					
Rated operating voltage range	U_b	10–39 VDC	10–39 VDC	10–39 VDC	10–39 VDC
Rated operating current	I_e	400 mA	400 mA	400 mA	400 mA
Max. switching voltage	F	10 kHz	10 kHz	10 kHz	10 kHz
Function/operating voltage indicator		LED/–	LED/–	LED/–	LED/–
Sensitivity adjustable					
Short circuit-protection		cyclic	cyclic	cyclic	cyclic
Mechanical data					
Ambient temperature (min/max)		–25°C/+70°C	–25°C/+70°C	–25°C/+70°C	–25°C/+70°C
Protection class in accordance with IEC 529, EN 60529		IP67	IP67	IP67	IP67
Connection		3 x 0.14 mm ²	M12 x 1	3 x 0.14 mm ²	3 x 0.14 mm ²



ELECTRONIC MAGNETIC SENSORS Type M12



Type	M12	M12	M12	M12
Enclosure material	CuZn39Pb3	CuZn39Pb3	CuZn39Pb3	CuZn39Pb3
Operating mode	MR	MR	Hall	Hall
Magnetic sensitivity (mT)	1 mT	1 mT	-	-
Sensing distance (Sn)	45 mm	45 mm	0-2 mm	0-2 mm
Reference magnet (Side)	T-62 N/S	T-62 N/S	-	-
Type of connection	Connector M12 x 1	Cable 5 m	Cable 2 m	Cable 2 m
Special feature	Temperature		Speed sensor	Speed sensor
PNP	NO contact	6373262123 MEM-M12PS/M01-KL5	6369662028 MEM-M12ND/H-K2	6379262120 MEM-M12PD/H-KL2
PNP	NC contact	6373162161 MEM-M12PÖ/M01-KLS12T		
PNP	bistable			
NPN	NO contact		6369662028 MEM-M12ND/H-K2	
NPN	NC contact			
Technical data				
Rated operating voltage range	U_b	10-39 VDC	10-39 VDC	10-36 VDC
Rated operating current	I_e	400 mA	400 mA	20 mA
Max. switching voltage	F	10 kHz	1500 Hz	20 kHz
Function/operating voltage indicator		LED/-	LED/-	-
Sensitivity adjustable				
Short circuit-protection		cyclic	cyclic	cyclic
Mechanical data				
Ambient temperature (min/max)		-40°C/+70°C	-25°C/+70°C	-25°C/+70°C
Protection class in accordance with IEC 529, EN 60529		IP67	IP67	IP67
Connection		M12 x 1	3 x 0.14 mm ²	3 x 0.14 mm ²



ELECTRONIC MAGNETIC SENSORS Type M12, M18



Type	M12	M12	M18	M18
Enclosure material	PA, red	PA, red	PBT, black	PBT, black
Operating mode	Hall	Hall	Hall	Hall
Magnetic sensitivity (mT)	–	–	10 mT	10 mT
Sensing distance (Sn)	0-2 mm	0-2 mm	17 mm	17 mm
Reference magnet (Side)	–	–	T-62 N/S	T-62 N/S
Type of connection	Cable 2 m	Cable 2 m	Cable 2 m	Cable 2 m
Special feature	Speed sensor	Speed sensor		
PNP	NO contact		6372263097 MEK-M18PS/H10-KL2	
PNP	NC contact	6379262119 MEK-M12PD/H-KL2	6372163099 MEK-M18PÖ/H10-KL2	
PNP	bistable		6373463127 MEK-M18PB/H11-KL2	
NPN	NO contact			6362663007 MEK-M18NS/H10-K2
NPN	NC contact	6369662027 MEK-M12ND/H-K2		
Technical data				
Rated operating voltage range	U_b	10–36 VDC	10–39 VDC	10–39 V
Rated operating current	I_e	20 mA	400 mA	400 mA
Max. switching voltage	F	20 kHz	10 kHz	10 kHz
Function/operating voltage indicator		–	LED/–	–
Sensitivity adjustable				
Short circuit-protection		cyclic	cyclic	cyclic
				Current limiter
Mechanical data				
Ambient temperature (min/max)		–25°C/+70°C	–25°C/+70°C	–25°C/+70°C
Protection class in accordance with IEC 529, EN 60529		IP67	IP67	IP67
Connection		3 x 0.14 mm ²	3 x 0.14 mm ²	3 x 0.14 mm ²

